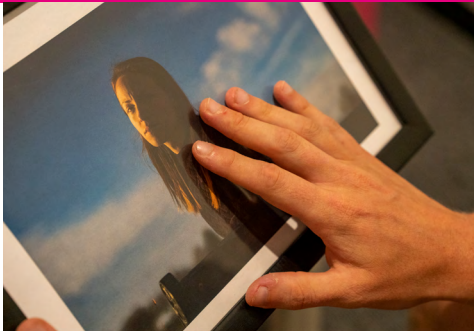


## ABOUT THE CAUSE

**Financial struggles, mental health problems and the exploitation of children mean that, for many, the only option is to disappear.**



It could be your child, someone in your family, a friend or colleague battling a crisis in silence. Or it could be you. When someone disappears, they become invisible, and many come to harm. It's life or death. Their loved ones are left with unimaginable loss. **Tragically, more missing people than ever before are being found dead, many due to suicide.** This is a national crisis. Missing People exists to connect everyone who is missing to safety, and to give them – and those who miss them – hope. **Today, with your help, the charity can support another person in crisis and give them a safe way home.**

Missing People offer a lifeline for people in crisis. We are the only UK charity lifeline for anyone affected by missing or thinking of going missing. Founded in 1993 by sisters Mary Asprey OBE and Janet Newman OBE, Missing People is a UK charity that provides specialist support to people who are missing or at risk of missing, and the families and friends left behind. **Our free, confidential helpline is available by phone, text and email to support missing children and adults, and their loved ones.**



## DONATE TODAY

**WE RELY ON YOUR SUPPORT FOR PEOPLE IN CRISIS.**

**£11.53**

COULD HELP US ANSWER  
THE CALL OF A PARENT  
WHOSE CHILD HAS  
JUST GONE MISSING.

**£98**

COULD HELP US LAUNCH  
A PUBLICITY APPEAL FOR  
SOMEONE WHO HAS  
DISAPPEARED.



**SCAN  
HERE TO  
DONATE**

**YOUR DONATION  
PROVIDES A LIFELINE TO  
VULNERABLE PEOPLE  
AFFECTED BY A  
DISAPPEARANCE AND  
WHO HAVE NOWHERE  
ELSE TO TURN.**

[www.missingpeople.org.uk](http://www.missingpeople.org.uk)



**missing  
people**

Registered charity in England and Wales (1020419)  
and in Scotland (SC047419)



Registered with  
**FUNDRAISING  
REGULATOR**

**missing  
people**

Registered charity in England and Wales (1020419)  
and in Scotland (SC047419)

**ANY OF US  
COULD DISAPPEAR.  
EVERY 90 SECONDS IN  
THE UK, SOMEONE DOES.**



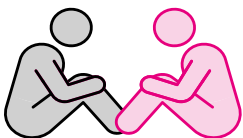


**SOMEONE  
IS REPORTED  
MISSING  
EVERY  
90 SECONDS  
IN THE UK**

**170,000 PEOPLE  
ARE REPORTED  
MISSING EVERY  
YEAR IN THE UK**



**CHILDREN IN CARE  
ARE AT HIGH RISK  
OF BEING  
REPORTED  
MISSING.**



**1 in 10** children in care are reported missing, compared to **1 in 200** children not in care. Children in care who are reported missing will be reported on average 6 times across their time in the care system.

For all children, those from **minority ethnic groups will go missing for longer**. When Black children are reported missing, 20% will be missing for over 48 hours, compared to only 13% of episodes where a White child goes missing.

# HELP FOR YOU

## IF YOU ARE MISSING

Missing People are **here for you, day and night**. There are lots of reasons why you might be thinking of leaving or going missing.

We have information and suggestions about ways you can stay safe and decide what to do next.

## IF YOU MISS SOMEONE

The charity offers support and **guidance**, no matter how long your person has been missing for. Help is available at every stage of a disappearance, including when a missing person returns home.

*“ Thank you for helping me to get to a safe place. ”*  
– A child supported by our helpline

**CALL OUR HELPLINE  
116 000 9AM - 11PM**

**SCAN  
ME TO  
GET  
HELP**

